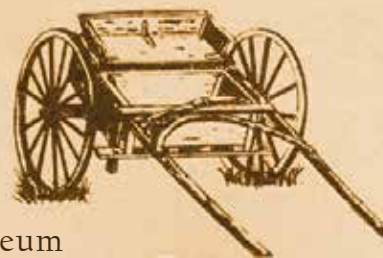


Fourth Issue 2018 ~ Oct. - Dec.
Next Issue January 2019

THE MAIL CART

Newsletter of the Simi Valley Historical Society and Museum



PRESIDENT'S AWARD

The Simi Valley Historical Society will recognize one individual quarterly with the "Simi Valley Historical Society President's Award" for outstanding service and commitment to the Community, the Historical Society, Strathearn Park, or local history in general. This award will be given 4 times per year. Individuals can be nominated for the award simply by sending an email to Simimuseum@sbcglobal.net with the subject line President's Award Nomination; include who is being nominated and why. The award can be granted to anyone in the community regardless of any affiliation with the Historical Society.



This quarter we would like to recognize **Susanne Clion** for her amazing dedication, length of service and enthusiasm. Susanne Clion has been a faithful docent here since at least 1990.

It seems as if she has been a reliable and dedicated docent on her regular Sundays even earlier than that. Lois McCarthy, who has since moved away to Montana, recruited Susanne from the Simi Valley Hospital pink ladies.

Susanne always decorates the Haigh-Talley Colony House for Christmas. When she's at the Park she quite often comes in costume, which instantly adds an element of authenticity to the event. When we had our annual teas, she was often out front at the gate, with parasol in hand, welcoming folks to that very popular event.

Susanne enjoys travel. Among other trips, she took an extended tour several years ago, of the sites that Lewis and Clark explored.

We appreciate all your years of faithful service and your contributions to the success of Strathearn Historical Park and Museum. You have been a wonderful friend, Susanne.

Pat Havens - Simi Valley Historical Society
Museum Director & Simi Valley City Historian

You are Cordially Invited to Our 54th Annual Dinner Meeting!

Friday, November 2nd, 2018 - 6:00 P.M.
at Rancho Santa Susana Community Center
5005 Los Angeles Avenue, Simi Valley, CA 93063

Please bring serving utensils and a dish that generously serves 10 people. Please label your utensils and dishes, so you can be happily reunited if you get separated! The Historical Society will provide tableware, paper goods, rolls and butter, iced tea, lemonade and water. Please bring a dish as determined by your last name according to the following breakdown:

A - J: Dessert
K - S: Main Dish
T - Z: Salad

If you pay your 2019 dues the night of the dinner you will be eligible for door prizes! This is always an enjoyable evening of great food and wonderful people. We hope to see you there!



Guest Speaker: Wyatt McCrea,
grandson of the late
Joel McCrea and Frances Dee

2018 Highlights and Updates * Election of
Officers and Board of Directors * Docent
Awards

Chumash 101 at Strathearn Park

1st Nations Chumash 101 Presentations for the public at Strathearn Park monthly on the 4th Sunday of the month from Noon to 1 pm in the Visitors Center!

Video presentations, ethnographical maps, subject books to peruse, clapper sticks, activities.

Trained archaeologist guest speakers, and more!



Mark Your Calendars:

October 28, 2018 - Dia de los Muertos
Celebration

November 2, 2018 -

Annual Membership Dinner Meeting at
Rancho Santa Susana Community Center

December 9, 2018 -Heritage Holiday Open House

February 2 & 3, 2019 - Civil War Days

Día de los Muertos Festival Returns to Strathearn Park

The Simi Valley Historical Society is inviting everyone to attend their fourth annual Día de los Muertos (Day of the Dead) celebration. This event will take place on Sunday, October 28th, from 2 – 7:30 PM, at Strathearn Historical Park & Museum.

Día de los Muertos now traditionally takes place on November 1 and 2—All Saints' Day and All Souls' Day. It is a celebration where deceased loved ones are remembered and revered.

The origin of Day of the Dead can be traced several thousand years to the Aztec, Toltec, and other Nahua people, who considered mourning the dead disrespectful. For these pre-Hispanic cultures, death was a natural phase in life's long continuum. The dead were still members of the community, kept alive in memory and spirit—and during Día de los Muertos, they believed they temporarily returned to earth.

Key elements of Dia de los Muertos revolve around ofrendas, or offerings, which are created through a visual display of altar-making and grave decorating. The offerings, a main focal point of the observance, echo the dedication and love toward the dearly departed. Altars are used to welcome the ancestors' spirits back into the home. The altar includes the four main elements of nature – Earth, Wind, Water and Fire. Everything on an altar

has special meaning. Sugar skulls, food, drinks— these are things you might find on 'ofrendas,' or altars, built this time of year to entice those who've passed to the other side back for a visit.

These days, Day of the Dead altars are also created in libraries, museums and classrooms in both Mexico and the United States, as a way of honoring Mexican traditions and encouraging cross-cultural understanding.

Altars created by local families will be on display at Strathearn Park at our Dia de los Muertos celebration. Anyone interested in building an altar can fill out a form on the Dia de los Muertos event page at www.simihistory.com or email simimuseum@sbcglobal.net for details.

At our Dia de los Muertos celebration we will also have music and dance troupes performing.

Aztec Dancers will perform traditional indigenous dances and speak to the symbolism and origins of Dia de los Muertos.

Please join us and experience this colorful celebration!



Simi Valley Historical Society & Museum presents...

Día de los Muertos

Day of the Dead Celebration
Sunday
October 28th, 2018
2pm-7:30pm

Strathearn Historical Park
137 Strathearn Place, Simi Valley

\$ 7 ADULTS \$ 5 KIDS (5-12)
Buy tickets online! www.simihistory.com

Indigenous Aztec Dances by
Danza Mexica Cuauhtemoc and
Danza Tlaloc Ollin - 2:30pm and 3:30pm

Mariachi Camarillo - 4:00pm & 5:45pm
Fredy Schiffan - 4:45pm

Ballet Folklórico Cielito Lindo-3:00pm
Grupo Folklórico Viva México de Simi Valley-5:15pm
Ballet Folklórico Fiesta Mexicana -6:30pm

Storytelling by True Thomas, Food Vendors
Face Painting, Dia de los Muertos Craft Vendors

Crafts for kids:
skull masks, tissue flowers and more!

Altars created by local families will be on display.
Come in costume or get your face painted at the festival!

For more information: (805) 526-6453 + SimiMuseum@sbcglobal.net
www.simihistory.com + [facebook.com/StrathearnPark](https://www.facebook.com/StrathearnPark) +

NOT AFFILIATED WITH SIMI VALLEY UNIFIED SCHOOL DISTRICT

TWILIGHT TOURS AT STRATHEARN PARK



On the evening of September 28th as twilight descended on our Park, hundreds of luminarias flickered, and we hosted our inaugural 'Twilight Tour' event!

Thirty-six guests embarked upon a one hour tour of historic buildings, and enjoyed the very different ambiance that exists at our 'Park after dark.'

The event was a success, and we hope to offer this type of tour again in the future!

If you missed this special event this time around, keep an eye on our website:

www.simihistory.com

We'll keep you posted as to when we'll offer this special tour again!





Pioneer Perspective

A Pioneer Speaks by R.E. Harrington, from Enterprise Sun & News,
February 23, 1969 and July 12 & 19, 1970

R.E. Harrington was a pioneer who came to Simi Valley in 1907 and lived here the remainder of his life. He wrote one of the early history books about Simi Valley; Early Days in Simi Valley. He also wrote a column in the Enterprise Sun & News in the 1960s into 1970 called 'A Pioneer Speaks' that touched on many topics of interest regarding early Simi history. The article below summarizes two articles he wrote about early stores in the valley.



The Sawtelle Store

Shoppers had only one choice to do their shopping in Simi.

One of the first stores in Simi was started by John F. Sawtelle, otherwise known as "Honest John," in the year 1888.

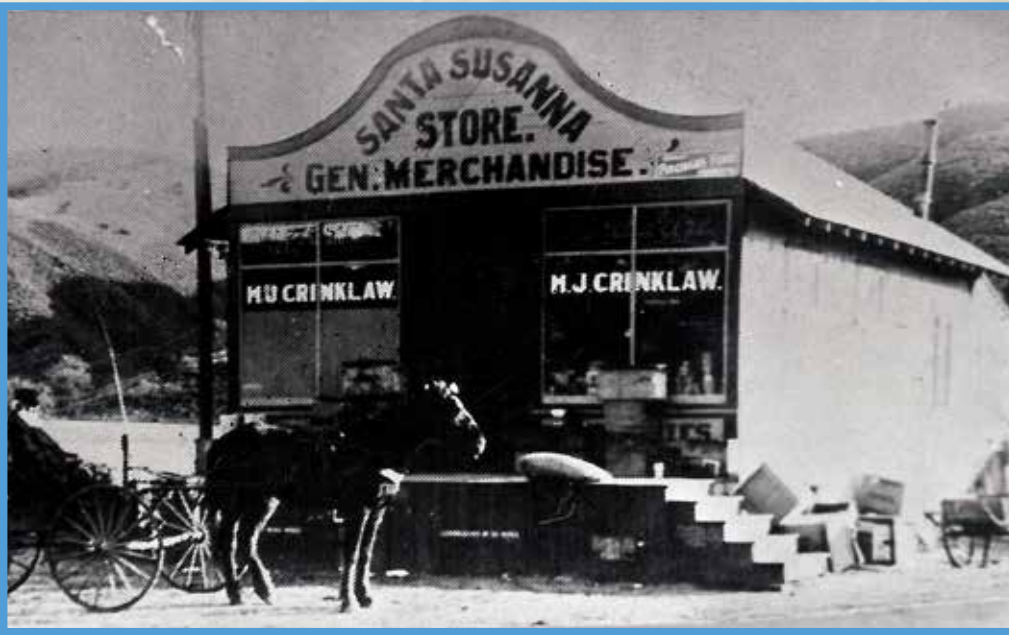
When the transcontinental railroad was built he had operated a store in a box car and had put shelving in a freight car for this purpose. When he decided to start a store in Simi, he bought the old railroad car in Los Angeles and moved it to Simi on a wagon, minus the wheels of course, and set it up for a store. The location of this store was on the corner of what is now Third Street and Los Angeles Avenue. He proceeded to build a front on the old box car where he sold meals for 20 cents. Drugs

were also carried in this portion of the building. The sides of the old box car can be seen in the center of the picture. Behind that, he built a sort of barn or feed store that was full of hay and grain, allowing him to move from the little store in front through the box car to the feed store without going outside and the shelving in the old box car held many items not too often called for. Behind the barn he had the first blacksmith shop. At a later date, after the railroad came, he used to drive a stage to Strathearn each morning to get the mail and any passengers for Simi, for at first there was no Simi Depot.

This store at first catered only to the families of 12 colonists who lived in Simi. As more came, business of course increased. Also competition. When I came down here in 1907 there were 2 other stores, namely W.S. Keir store and the Montgomery store. But this first store still continued to do business. Honest John used to drive to San Fernando about once a week to get supplies for his store and for small articles, then often charged 2 or 3 times what he paid for them. The first store changed hands several times and was still operating when I first came down here. About the last ones to operate it were Mungen and Reed. Reed was a clerk in the Keir Store and Mungen was a clerk in the Montgomery store. They decided that they would be better off in a store of their own, so they bought this old store. Reed used to drive around and get orders and later deliver the goods. My father and mother traded with them because it saved them a 3 mile trip in a horse and buggy to



W.S. Keir Store - The Simi Store at Strathearn Park is modeled after this store.



The first Crinklaw Store (1910)

get their groceries. All went well until Reed fell in love with a girl on the route. Then he would come around invariably with an item or 2 short. When asked where they were he would usually reply, "Oh, I clean forgot!"

The store in the picture is of the first store in Santa Susana. It was built by H.J. Crinklaw about 1910 across from the depot and operated by Mrs. Crinklaw. Like other stores of the day it was a general store carrying a little of everything. If they didn't have it in stock, they would order it for you. It also contained the Post Office. At Simi the Post Office was in a colony house and closed after dark. But Mrs. Crinklaw was al-

ways open in the evenings and kind enough to let me have my mail when called for. So I rode horseback to her store almost every night to get the mail. It so happened that I was engaged at that time to Miss Ethel Ross, who was attending Stanford University, and so mail was a very important item to me. Sometimes I rode up the Arroyo Simi, at that time known as the creek road, especially in seasons when Los Angeles Ave., was very dusty due to the hauling of grain. Mrs. Crinklaw always knew the letter that I was looking for, and used to tease me. She seemed to get a lot of fun out of it and so did I, especially if I got a letter.

***Speaking of Stores...
Simi Store Book Sale!***



All Civil War and Native American books will be on sale for 40% off at the Dia de los Muertos event on October 28th, 2018.

A wide selection of over 60 books available. Native American books include picture and coloring books for children and the classroom.

Also...Dia de los Muertos T-shirts will be on sale - \$10 (small-Xlarge) and \$12 (2xl & 3xl).

Coming up at the Holiday Open House on December 9, 2018 - all vintage and antique linens - 30% off tag price. Great gift ideas for all - wood games and toys, handmade crafts and books. The Simi Store will also feature vintage and antique items from estate sales for the kitchen , cast iron coin banks, croquet set, children's rocking chair and much more. Great ideas for Holiday shopping!

Contact store manager - Linda Bosley at lindabosley66@gmail.com with questions.



Officers

President	Joe Wade
Vice President	Vicki Spilka
Secretary	Judy Pepiot
Treasurer	Don Novell

Board Members

Linda Bosley	Kris Grayson
Pat Havens	Ruth Jacob
Richard Johnson	Dena Kauffman
Nancy Kidd	Sylvia Moya
Karen Olson	Ryan Valencia

Directors at Large

Joe Lansden	Dewey Runkle
Alan Shack	

Strathearn Historical Park & Museum

Historian	Pat Havens
Park Coordinator	Carolyn Valdez
Admin. Asst.	Louise Kaul

Simi Valley Historical Society & Museum

P.O. Box 940461

Simi Valley, CA 93094-0461

www.Simihistory.com

www.facebook.com/Strathearnpark



Simi Valley Historical Society & Museum
Located at Strathearn Historical Park & Museum
137 Strathearn Place, Simi Valley, CA 93065



The Mail Card is sent quarterly to all current members. The Simi Valley Historical Society & Museum's membership year runs from January 1 through December 31. If you want to avoid the busy time around the Holidays, send in your dues for 2019 now!

The Mail Card is electronically being sent to all members with an email address on file. If you are receiving a 'paper copy' of the Mail Card and would like to receive it via email (*there are extra articles in the electronic version!*) please send us your email address. Any changes to your email address should be included to continue receiving the electronic Mail Card! If you do not have an email address, or have requested a printed copy of the Mail Card, the postal service will continue to deliver your copy. Questions regarding your membership? Call our business office at 805 526 6453 or email simimuseum@sbcglobal.net

**Renew your membership
before January 2019!**

Name _____

Address _____

Phone _____ Email _____

Credit/Debit Card: MC VISA Discover Card

_____ Exp _____ CVV# _____

Signature _____

(Payment Mailing Address) PO Box 940461, Simi Valley, CA 93094-0461

Please select desired membership.
Make checks payable to SVHS&M

- | | |
|--|------------|
| <input type="checkbox"/> Individual | \$15.00 |
| <input type="checkbox"/> Family | \$25.00 |
| <input type="checkbox"/> Business/Sustaining | \$100.00 |
| <input type="checkbox"/> Patron | \$500.00 |
| <input type="checkbox"/> Benefactor | \$1,000.00 |