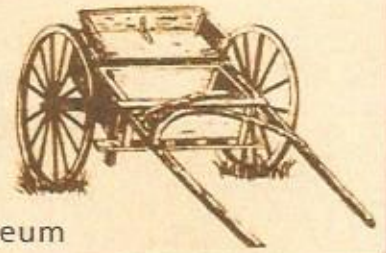


Third Issue 2017 ~ July-September
Next Issue October 2017

THE MAIL CART

Newsletter of the Simi Valley Historical Society and Museum



President's Message

In 1888 and 1889, twelve houses were partially assembled in Chicago and shipped via rail to Saticoy. From Saticoy, they were transported to Simi Valley via wagon. Most of them were placed on log foundations and assembled in the area between current day Los Angeles and Royal Ave's, just West of current day First Street. Imagine, at that time, the valley was empty. Natural vegetation covered the valley floor and the mountains surrounding the valley seemed impossibly far away. It was a harsh environment with few resources. The houses sold for about \$300 each.

A number of brave, adventurous pioneer families came from various places to start their new lives in the newly assembled village of houses called Simiopolis. One of the houses became a church, and a school. The porch of one of the houses was eventually enclosed and became a post office.

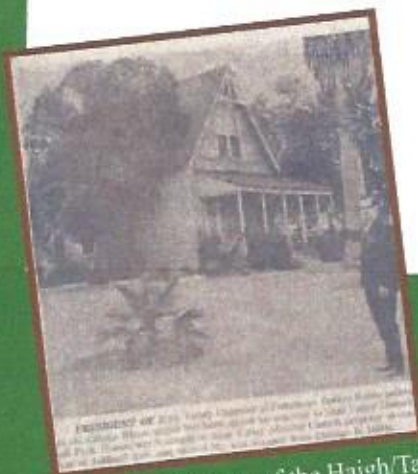
Over the years, as our little town grew, many of these original houses burned down due to the poor design of the integrated wood burning furnaces. Two of these houses still remain today. One, the Haigh/Talley Colony House has been moved to Strathearn Historical Park and restored. The other, still stands in its original location on its original foundation at Second and Pacific. This house, owned by the Printz family from Chicago, is the last remaining piece of Simiopolis.

Within the next year, this last remaining piece of Simiopolis will be moved to Strathearn Park and aside from a few trees planted by original Simiopolis homeowners, all evidence of the original little town will be gone from the area.

Moving the house will be expensive and the Historical Society is planning a fundraiser to help raise the necessary funds for the move.

The money raised at this event will enable the Historical Society to complete the move, preserve the house, and reunite the two remaining Colony Houses on the grounds of Strathearn Park. Stay tuned for more details (coming soon). Don't miss your chance to "party like it's 1889" at the last remaining piece of Simiopolis before it is gone.

Joe - President, Simi Valley Historical Society



Mayor Huber in front of the Haigh/Talley Colony House before the move to Strathearn



The Haigh/Talley Colony House on the move in 1970!



The Colony House at Strathearn in 1971. One down...one more to go!

Simi Valley Historical Society Board of Directors Sees Changes

The Society's volunteer Board of Directors is losing three seasoned members in August: Terri Malkinson, Larry Silverman and Georgia Trumble are all relocating to other areas. They leave some empty shoes that need to be filled!

Terri joined us as a docent in 2010 and joined the Board of Directors in 2016. During her years of service she has stepped up to chair several events in addition to taking over the Simi Store sales & stocking, with great revenue success. She is transferring the Simi Store duties to our society member, Linda Bosley, who graciously volunteered to step into one of Terri's shoes.

In 1998 Larry & Georgia both came to us, and have worn many hats over the 19 years. Both were involved with the production of our books - SIMI VALLEY: Journey Through Time as well as, SIMI VALLEY: The Strathearn Letters, Windows on the Past.

Larry has served as a docent, our webmaster, and is currently Vice-President, positions left unfilled with his departure.

Georgia has been our Treasurer, President and Docent Coordinator, as well as the all-around-go-to person for anyone needing help with projects or events. Docent Bruce Matzen is assuming the docent training program. Dr. Frank Sinsheimer along with Karen Olson are taking on the docent scheduling. Thanks to Bruce, Frank and Karen for filling these critical roles!

We are so grateful for their years of service & wish them all well on their new adventures.

Our Board of Directors is actively seeking additional members. Applicants need to bring a variety of personal skills and experience that will augment growth and further the development of the organization by offering leadership and teamwork.

For more information, call our Visitor Center 805-526-6453

A Note From Georgia...

To my wonderful Docents and Volunteers.

In the beginning, when I was asked to replace Karla, I said no. I couldn't imagine filling Karla's shoes. The more I thought about it, I knew I could make some changes that I thought would work for us all. If you remember, I asked for your input regarding making changes. I was amazed at how many of you responded, and with outstanding ideas.

Since that time, I hope you agree, we've progressed to everyone's satisfaction.

As you know I will be moving to Roseville to be near my Northern family.

I have never worked with people like you. You are dedicated to a cause that is close to all of us. You are willing to do what is asked of you, and most of all you love Strathearn Historical Park and Museum as much as I do.

Thank you for all your help, ideas, suggestions, support, and keeping me on the straight and narrow.

I will get back for visits as often as possible.

Love you all, Georgia



PRESIDENT'S AWARD

Simi Valley Historical Society & Museum



at Strathearn Park

The Simi Valley Historical Society President will recognize one individual quarterly with the "Simi Valley Historical Society President's Award" for outstanding service and commitment to the Community, the Historical Society, Strathearn Park, or local history in general. This award will be given 4 times per year. Individuals can be nominated for the award simply by sending an email to SimiMuseum@sbcglobal.net with the subject line President's Award Nomination; include who is being nominated and why. The award can be granted to anyone in the community regardless of any affiliation with the Historical Society.

This quarter I would like to recognize Brenda Lyum. Brenda has been at Strathearn Historical Park since 2015 as both a docent and volunteer. In addition to her regularly scheduled docent duty every first Friday of the month, she also takes any fifth Friday that comes up. For the last two years, Brenda has volunteered her time twice a week to preserve and maintain Strathearn's historical buildings and artifacts. All in all, Brenda is helping at Strathearn Park about 1/3 of the days each month (about 120 days a year). She is there during special events to insure the programs are set up and broken down in a timely fashion. Her support is invaluable. Her efforts

have made Strathearn Park and Museum better!! Brenda is also involved in the community, volunteering her time helping educate children and as an usher at her church. Our community needs more volunteers like Brenda. Thank you Brenda!

Joe Wade-
President, Simi Valley Historical Society

Día de los Muertos

Strathearn Historical Park
137 Strathearn Place, Simi Valley

Day of the Dead Celebration

Sunday

October 29th, 2017

2pm-7pm

\$ 7 ADULTS

\$ 5 KIDS (5-12)

Music • Dancers • Live Performances •
Face Painting • Food vendors
Día de los Muertos craft vendors
Crafts for kids

Altars created by local
families will be on display.

Buy tickets online!!!

Go to <http://svhs.ticketleap.com>

For more information:

(805) 526-6453 + SimiMuseum@sbcglobal.net

www.simihistory.com + [facebook.com/StrathearnPark](https://www.facebook.com/StrathearnPark)

Mark Your Calendars:

October 29, 2017 - Día de los Muertos Celebration

November 3, 2017 -

Annual Membership Dinner Meeting at

Rancho Santa Susana Community Center

November 18, 2017 - Rocket Day:

The Fires of Creation

February 3, 2018 - Colony House Simiopolis

Fundraiser

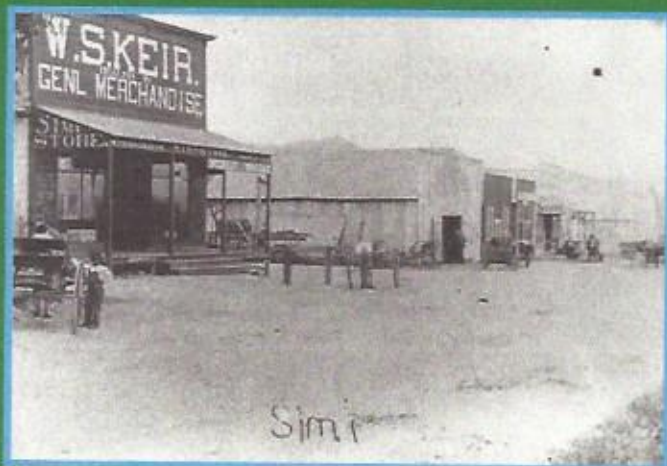
February 10 & 11, 2018 - Civil War Days

Great Things In Store!

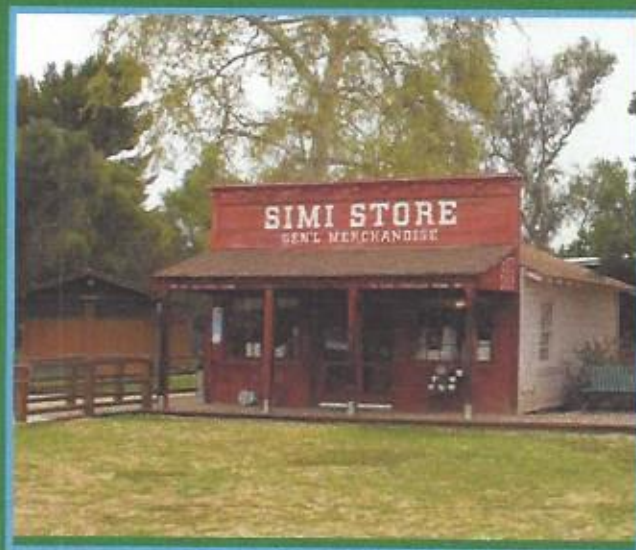


The grand re-opening of the Simi Store will take place on October 29, 2017 as part of the festivities of the Dia de los Muertos celebration. New store manager, Linda Bosley, was introduced at the July board meeting. Linda has managed the Post Store at Fort Tejon State Historic Park for ten years and is an 8th grade U.S. History teacher. Linda gave a presentation that outlined the transition from gift shop to a general store theme. First item discussed was the rebranding of the store as the Simi Store to reflect the history of Simi Valley. Second, new inventory including old fashioned children's games – jacks, marbles, jump rope, bonnets and a wide variety of children's books will fill the shelves. Additionally, merchandise that ties in with Strathearn special events and a line of souvenirs (patches, magnets, tack pins, key chains) will be offered. Strathearn t-shirts and Native American items for school tours will continue to be on sale. Finally, Linda outlined the Simi Store manager responsibilities for the board.

A sneak peek of the store is tentatively scheduled for Saturday, September 23, 2017. Historical Society members can come by to check out the new merchandise between 11am-3pm. Members can continue to donate items to the Simi Store with emphasis on the enhancement of the General Store theme and sales viability. Please contact Simi Store manager, Linda Bosley at lindabosley66@gmail.com before making donations or with any questions.



The Simi Store at Strathearn Park was modeled after the W.S. Keir general store in old town Simi. Above you'll see a photo of the Keir store in the early 1900s. In the 1980s an old garage on Strathearn property was moved to the Park and repurposed as the 'Simi Store.' It served as the park's Visitors Center for a time. Changes are 'in store' now for the Simi Store as it reopens soon with a selection of new merchandise!



Mechanical Restoration



We are having a great time in our workshop here at Strathearn Park. Each Monday morning we meet around 8:30 AM catching up on the previous weeks' activities, discuss what we will be working on for the day, have some coffee, and just enjoy the rewards of volunteering and giving back to our wonderful City of Simi Valley CA.

It is hard to believe that we are almost halfway through the summer months and so much has been accomplished this year. The workshop rearrangement is finished and we have more room to work, better location of our equipment, tools, and power equipment along with different types of welding capabilities.

The work continues on the 1934 Caterpillar 22 Tractor with the remaining tasks in process every Monday along with the Gordon Smith Model A Air Compressor. We recently received a donation of a Onan generator arc welder that needs some attention in the near future. Work continues of our Farm Implement area with Dewey Runkle's guidance and knowledge of this specialized portion of the collection.

We welcome anyone who has a desire to volunteer. There is something for every skill level. You do not need to be a master mechanic or technical expert, just have a desire to come on down and lend a hand for a few hours on a Monday morning.

If you have any extra mechanics' tools or machinist tools we would appreciate hearing from you. Our eight-inch Logan Metal Lathe needs accessories tool post, cutting tips, live center, steady rest, and so on.

Wishing everyone a safe summer, hope to see you at the Park very soon.

Regards,

Richard A. Johnson - Simi Valley Historical Society Mechanical Restorations Director

Story Tellers Needed!

Would you like to teach people about the interesting history of our community and tell stories to illustrate how life was lived a long time ago? Get Involved at Strathearn Historical Park and Museum and the Simi Valley Historical Society! We are looking for story tellers that enjoy learning and teaching our history!

We have presentations scheduled for September 7th, 14th, 21st, and 28th from 7 pm to 9 pm. These presentations cover the history of Simi, and the history of the beautiful historical structures at our park. They will teach you everything you need to know to begin a rewarding and fun role as a volunteer guide at the park!

At Strathearn Historical Park & Museum volunteer hours are flexible, and there are various activities and programs available to satisfy a broad spectrum of interests. The basic commitment is one day a month, but most of our volunteers sign up to do much more. Come and join a wonderful group of people who are dedicated to preserving as well as sharing Simi Valley's history.

If you are interested please call Bruce Matzen 805-582-9336 or email the Visitors Center at simimuseum@sbcglobal.net



HISTORY POLICE

In this issue of **HISTORY POLICE** we'll talk about **SIMIOPOLIS** and the 'COLONY HOUSES.'

When Simi Land and Water Company was formed in order to subdivide the area for the first time, advertisements were dispersed throughout the country. Simi Rancho lands were offered for \$10 to \$100 per acre.

The ads reached the midwestern and the New England states, for that is where many of our early pioneer families came from.

These ads were more than a little "fanciful," as they showed the Simi Creek as a flowing river, with a paddle wheel steamer on it, and a man pulling out large fish.

In Chicago, a group of investors composed mainly of doctors thought they saw marvelous opportunity to buy western lands, so they formed the **CALIFORNIA MUTUAL BENEFIT COLONY OF CHICAGO**, which was soon shortened to '**THE COLONY**.' They arranged to send twelve pre-fabricated houses (pre-cut and partially assembled) to form the nucleus of the new little town, which they gave the grand name, **SIMIOPOLIS**. It was only called 'Simiopolis' for about 6 months.

Sometimes a story surfaces that they were brought 'around the horn' of South America. **THIS IS NOT TRUE**. The twelve houses were identical, pre-fabricated, partially assembled, and sent west to Saticoy via the railroad. There has been a question whether there were thirteen colony houses. **WE DON'T THINK SO**. There has never been substantiation that there were thirteen. When people hear about 'kit' houses they sometimes assume they are Sears kit houses. **THEY WERE NOT PURCHASED FROM SEARS**. The Colony Houses were partially built kit houses, but they were manufactured by T.W. Harvey in Chicago, Illinois. They were sent to Simi in 1888, this pre-dates the Sears houses by 20 years.

The first group of colonists left Chicago on November 8, 1888 for their trip west by rail. Bessie Printz said her parents described watching the houses being loaded on railroad cars in Chicago. At this end, Frank Bither hauled them by wagon from Saticoy, the closest rail point at that time. Simi Land and Water Company had built a three-story hotel at the east end of Simi Valley (at approximately the location of the present Simi Valley High School), to accommodate their prospective buyers. Some of those first arrivals stayed at the hotel and others in tents near their property. Things did not go well with the colony from the beginning as the houses were not ready and many other problems arose. The newcomers found in Simiopolis a town with no river, no schools or churches and no roads.



Amazing Docent Stephanie Langlois can tell you all about the Haigh/Talley Colony house



Haigh Talley House being moved in 1970

Ninetta Eames, one of the Simiopolis residents wrote about her journey to Simi Valley in the Overland Monthly magazine.

"There was something uncanny about this lonely village, with its mathematical likeness and precision," said Eames of the colony houses in the development of Simiopolis.

All but two of the twelve Colony Houses were located in the town site laid out by the colony, which is south of LA Ave to Ventura and west of First St. to Fifth St. (One was on the Austin ranch near Cochran and Erringer, where the Vons market is today; the other, the Bott House, was near the Madera freeway on ramp and had to be moved south out of the way of the railroad) The houses probably cost only a few hundred dollars, and the company as a special inducement, paid the freight on houses ordered before October 1, 1888.

Many of the colony houses burned down. **NOT ALL OF THEM BURNED DOWN, TWO HAVE SURVIVED.** One, the **HAIGH/TALLEY** Colony house is located at Strathearn Historical Park. This Colony House was the first historic building brought to the historical park soon after its formation (1970). The other, still on its original lot, is owned by Larry Powell.



The Printz Colony House before the porch was added to the house before Powell and worked for the telephone company until her retirement.

Now we are on the brink of moving the **PRINTZ/POWELL** Colony House to Strathearn Park! The two remaining Colony Houses will be preserved for future generations at our Historical Park. Please stay tuned for details of a fundraising event in February 2018 which we are planning at the site of the Printz/Powell colony house on the corner of Second and Pacific. Come be a part of history...before the last of **SIMIOPOLIS** is moved away.



The Printz/Powell Colony House in its current location.



Still in the planning stages: one of the proposed locations of the Printz/Powell colony house/next to the Haigh/Talley colony house once it is relocated to Strathearn Park.

A Ripley's Believe it or NOT' from around 1966 about the Colony House currently at Strathearn Park!

Ripley's Believe It or Not!

Handwritten: "Did you know? It's true!"

THIS HOUSE
in Simi, Ventura County, Calif.
WAS ORIGINALLY BUILT IN CHICAGO
IN 1889, THEN TAKEN APART AND
TRANSPORTED TO CALIFORNIA
-ONE OF 12 STRUCTURES
CARTED ACROSS THE COUNTRY
BY ORIGINAL SETTLERS

© King Features Syndicate, Inc. 1966. World Wide Journal, 2-19

KING CROESUS
fabulously wealthy monarch of Lydia
CAPTURED AND ORDERED
BURNED TO DEATH BY
KING CYRUS OF PERSIA
WAS SAVED WHEN THE FLAMING
PYRE WAS EXTINGUISHED
BY A SUDDEN RAINSTORM!
CYRUS RESCINDED THE
DEATH SENTENCE (545B.C.)

THE COMPASS CART OF CHINA
Emperor
Cheu-Kung
WHO RULED
CHINA IN THE
2d CENTURY B.C.
ALWAYS
TRAVELED
WITH A CART
SUPPORTING
A STATUE
BEARING A
MAGNETIC
COMPASS.

A celebration of the local aerospace workers and industry that made the US Space programs possible...

In person NASA astronaut from Johnson Space Flight Center

Aerojet Rocketdyne H-1 rocket engine on display

Frank Winter from the National Air and Space Museum

Astronaut ice cream and other novelties

Food trucks and vendors

Live feed from the International Space Station

"Mission Control" room launch videos, NASA videos

Dr. E.C. Krupp, Director, Griffith Observatory

Memorabilia and photos from Rocketdyne on display

And much, much more!!

Adults: \$10.00 | Children: \$5.00 | Children 4 & under: FREE
(13+) (5-12)

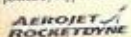
Saturday, November 18th 2017
11 AM - 5 PM

The Simi Valley Historical Society presents

THE FIRES OF CREATION

at Strathearn Historical Park and Museum
137 Strathearn Pl. Simi Valley, CA 93065 (805) 526-6453

Made possible by support from...



More great things!

SIMI GOES TO WAR
1917 - 2017

PART II - WWII THE HOME FRONT

Presented By: Simi Valley Historical Society
Hosted By: Museum of Military History

SATURDAY, AUGUST 19, 2017 2:00 P.M.
At The Museum of Military History,
Simi Valley Town Center

Presentation Outline:

Greetings & Acknowledgements - Matt Valenzuela
Color Guard Pledge of Allegiance - Joint Forces
National Anthem - John Calderon
Introduction Simi Valley Historical Society -
Wayne Ferber & John Clarke
WAR CLOUDS 1918 - 1941 - Ed Tingstrom
U.S. MILITARY STRENGTH 1941 - Wayne Wright
SIMI VALLEY 1940 - 1945 - John Clarke
Simi Valley Citizen Wartime Participation - Wayne Ferber
Close - Matt Valenzuela
Q and A

The Museum of Military History
is located at
1555 Simi Town Center Way, #220
Simi Valley, CA 93065
<http://www.svmh.org/museum.html>
(805) 578-1539



Take a Step Back in Time



Strathearn Historical Park & Museum

Weekday Park Hours: Park grounds are open 9 AM-3 PM Mon. - Fri.
(excluding major holidays)

(The Visitor's Center and the grounds are open for self guided tours during these hours,
however the inside of the historic buildings can only be viewed during a Docent-led tour)

Docent-led Tours:

One tour each day on Wed., Thurs., & Fri. at 1 PM promptly.

Tours on Sat. & Sun. between the hours of 1-4 PM
with the last tour leaving at 2:30 PM

137 Strathearn Pl. Simi Valley, CA 93065 805-526-6453 simihistory.com



The Santa Susana Train Depot & Museum

The Depot is the home of the Rancho Simi Foundation and the Santa
Susana Pacific Model Railroad Club. Come and travel back to the past
in this wonderful museum and train layout.

The Depot is open for tours every Sat. & Sun.
from 1 PM to 4 PM
(excluding major holidays).

6503 Katherine Rd., Simi Valley, CA 93063

www.santasusannadepot.org

For information or to schedule a group tour call 805-581-3462



Simi Valley Historical Society & Museum
 Located at Strathearn Historical Park & Museum
 137 Strathearn Place, Simi Valley, CA 93065



The Mail Cart is sent quarterly to all current members. The Simi Valley Historical Society & Museum's membership year runs from January 1 through December 31.

The Mail Cart is being sent electronically to all members with an email address on file. If you are receiving a 'paper copy' of the Mail Cart and would like to receive it via email (*there are extra articles in the electronic version!*) please send us your email address. Any changes to your email address should be included to continue receiving the electronic Mail Cart! If you do not have an email address, or have requested a printed copy of the Mail Cart, the postal service will continue to deliver your copy. Questions regarding your membership? Call Caryl Barefoot at 527-2769 or email at carylretired2@sbcglobal.net

Name _____

Address _____

Phone _____ Email _____

Credit/Debit Card: MC VISA Discover Card

_____ Exp _____ CVV# _____

Signature _____

(Payment Mailing Address) PO Box 940461, Simi Valley, CA 93094-0461

Please select desired membership.
 Make checks payable to SVHS&M

- | | |
|--|------------|
| <input type="checkbox"/> Individual | \$15.00 |
| <input type="checkbox"/> Family | \$25.00 |
| <input type="checkbox"/> Business/Sustaining | \$100.00 |
| <input type="checkbox"/> Patron | \$500.00 |
| <input type="checkbox"/> Benefactor | \$1,000.00 |

2017 Board of Directors

Officers

President	Joe Wade
Past President	Georgia Trumble
Vice President	Larry Silverman
Secretary	Judy Pepiot
Treasurer	Don Novell

Board Members

Caryl Barefoot	Pat Havens
Ruth Jacob	Richard Johnson
Dena Kauffman	Nancy Kidd
Terri Malkinson	Sylvia Moya
Karen Olson	Vicki Spilka

Directors at Large

Steve Hansen	Karla Hubbell
Joe Lansden	Dewey Runkle
Alan Shack	

Docent Led Tours: Saturdays & Sundays: Between the hours of 1 & 4 pm

Wednesdays, Thursdays and Fridays: One tour at 1 pm

Donation: \$3 for Adults, Simi Valley Historical Society Members are Free

We are a Blue Star Museum - Active Duty Military Personnel and Families are Free

Weekday Park Hours: Monday - Friday

9 am - 3 pm

For information please call (805) 526-6453

Email: Simimuseum@sbcglobal.net

Simi Valley Historical Society & Museum

P.O. Box 940461

Simi Valley, CA 93094-0461

www.Simihistory.com

www.facebook.com/Strathearnpark

Strathearn Historical Park & Museum

Historian	Pat Havens
Park Coordinator	Carolyn Valdez
Admin. Asst.	Louise Kaul