

Master Plan Envisions an 'Exciting' Valley Future

Recreation and park district directors were handed Wednesday a 64-page master plan detailing Simi Valley's recreation needs through 1985.

The plan, prepared by Thousand Oaks landscape architect Donald M. Roberts, describes what he terms an "exciting" system of park and recreation facilities needed by the park district during the next 26 years.

Roberts said his plan sketches minimum facilities that would be needed to serve a projected Simi Valley population of 210,000 by 1985.

District directors took the master plan under advisement, and are expected to accept it within two weeks.

Planning for the park district's 84,500 acres in 132 square miles, the report points out that "With ingenuity and enterprise, the Simi Valley recreation and park district can develop parks to serve the area's needs within the shortest possible time, and with more-than-usual support from revenue-producing facilities."

The master plan put emphasis on the expected recreation spill-over from park-poor San Fernando Valley once the proposed Simi freeway is completed.

For this reason, Roberts suggests that the district plan a

series of regional parks — developed jointly with Ventura County — to accommodate the population both in Simi Valley and adjoining areas. Costs would be offset by revenue-producing concessions and vending operations in the parks.

Of Simi Valley's estimated 210,000 population by 1985, Roberts projects that 95 per cent will live in single family homes. In the same 26-year period, San Fernando Valley's population will have swelled to almost 1.4 million.

Among the park and recreation proposals for Simi Valley listed in the master plan are:

— Scenic automobile routes, totaling 46 miles, to connect most of the proposed regional parks and several community parks to be developed by the district.

— A arboretum, zoo, and development of Valley historical sites. The master plan suggests that private organizations — functioning as a public trust — would hopefully assist in the promotion, development and administration in these areas.

— Picnicking facilities, designed to also accommodate the expected influx from San Fernando Valley, to be provided in most local parks. The park district would gain the revenue from fuel-vending devices at the picnic sites.

— Riding and hiking trails developed in conjunction with the Arroyo Simi, which Roberts termed "a central nervous system for a magnificent pattern" of trails. The master plan suggests that an advisory committee be formed to assist in the establishment and administra-

tion of a trails system within the district.

— Camping facilities, with emphasis on proposed regional park locations, which would provide revenue to the park district through concessions.

—Swimming and boating facilities, called a "major element" in the master plan, would be provided in a series of reservoirs from 16 to 280 surface acres. The lakes would be acquired and developed in conjunction with the county and flood control district.

The master plan urges continued communication between the park district and the Simi Valley unified school district to provide joint use of facilities parks and schools are adjacent, Roberts writes that Simi school Superintendent David H. Paynter "is to be highly commended for his vigorous effort toward this end."

Close Playgrounds

Also Wednesday, directors — noting below-average attendance at after-school playground programs at several elementary schools — voted to curtail activities at some schools, and give others a two-week reprieve.

Leslie G. Reed, general manager, recommended that playground programs at Lincoln elementary school be closed, and that activities at the new Township and Big Springs elementary schools not be started until next January. Programs at Walnut Grove and Knolls schools were closed down Monday because of lack of attendance, Reed said.

The board voted to continue afterschool programs at Arcane, Park View, Vista, Santa Susana and Belwood playgrounds for another two weeks, followed by an evaluation of attendance. The program at Simi elementary will be boosted to a full schedule for two weeks and then re-examined, Reed said.

The general manager stressed that his recommendation to curtail the playground program "in no way compromises" his contention that "there's a real need for the elementary playground program."

Reed said the falling attendance at some playgrounds this fall is "testimony to the fact that some neighborhoods need the program and some others apparently don't."

Call It Berylwood

Berylwood.

That's the name Simi Valley recreation and park district directors gave to their 6.3-acre park site at Los Angeles avenue and Bridget street Wednesday.

Then, as a baptism gift, directors voted to spend an estimated \$42,850 for initial development of the site this year.

That sum is expected to provide lighting, grading, a restroom facility, shrubs, trees, ground cover, turf, sprinkler system and paving.

Also slated for Berylwood park is the former Simi Park sales office and model home, to be joined at the site and used for park district offices and public meeting space.

"Berylwood" was chosen as a name for the site after directors shunted aside a handful of other suggestions. Among them were "Bard," "Lawndale," "Kingspark," "Valle Verde" and "Lincoln."

Berylwood park is adjacent to the proposed elementary school of the same name.

Site for Center

Recreation and Park district directors Wednesday approved a 13-acre park site for the location of the proposed Simi Valley community center building.

The action came on a request from the community center committee, who already has \$9,400 banked from Pioneer Days and other fund-raising projects to finance construction of the center.

The center, when built, will occupy a park site on the south side of Cochran, between Peppertree and Sycamore.

District directors also voted Wednesday to join with the center committee in preliminary architectural and site planning for the proposed building.

When constructed, the community center, would be a public facility operated by the recreation and park district.

In Unusual Statement:

Park Board Defends Development Policies

The pace of Simi Valley park land acquisition and development was defended this week in a statement issued by the recreation and park district board of directors.

The board asserted that it "took exception" to the implication by three candidates for the board "that the current board of directors is responsible for the fact that no local park has developed."

Directors didn't name the three candidates in their statement, which makes these points:

1. The board had agreed to develop first a park to serve the entire community, but owned no community park property in the 1962-63 fiscal year and "had no appropriation for park development."

2. The district didn't acquire a grant deed to a community park site until September of

1963, this was a 6.5-acre facility at Los Angeles avenue and Bridget street.

3. The board "had attempted to budget \$30,000 for park development" for the fiscal year the community park site was acquired "but was thwarted in our efforts by members of the community that protested. The total appropriation for 'development' in the year 1963-64 was \$10,000, and that was earmarked for 'structure improvements.'"

That structure improvement represented expected cost in moving a tract sales office and model home — donated to the district — to the Berylwood park site, but the costs did not occur and the money wasn't spent, directors said.

"Some critics of the district have since suggested that the \$10,000 should have been spent," directors noted, and added: "To spend the money without proper

planning, just because it was there, would be irresponsible spending."

Directors noted that they'll be able to spend about \$40,000 for development this year on Berylwood park at Los Angeles and Bridget "now that the proper planning has been accomplished."

"The design of this park is such that all members of the community will be able to take advantage of the grounds and the small recreation building," directors asserted.

"Critics of the district infer that 'monuments' are being planned instead of 'just usable' parks.

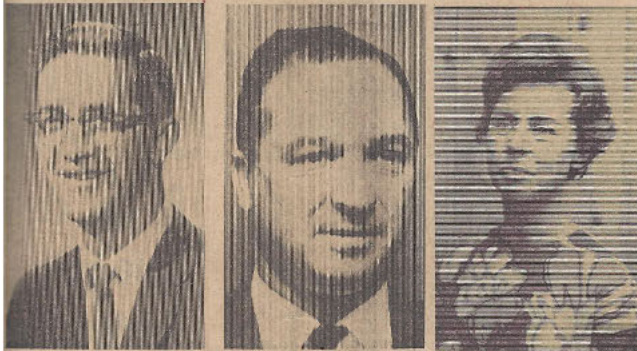
"This year the district plans to grade the 6.5 acres of property (about \$4,500); establish paths and walks (about \$3,000); install an irrigation system (about \$4,000 an acre); plant

grass (about \$3,500); pave the parking area (about \$6,000); plant trees and shrubs (about \$2,000); restroom facilities (about \$5,000); supply some park lighting (\$1,750) to guarantee the necessary security and make ready the small recreation building which will include four meeting rooms."

Directors said exact costs for this work won't be known until after competitive bidding.

So far, the park district "has firmly located eight park sites," directors stated, has received cash to buy more land, and holds a deed of trust for still more sites. "The total land now assured the residents of this district is now 69 acres," board members noted, and estimated its market value at over \$800,000.

Dewart, Brannen, Ahlstrom Win Simi Park Dist. Seats



William Dewart, Ray Brannen and Margaret Ahlstrom

By Ed O'Malley

William Dewart, Ray Brannen and Mrs. Margaret Ahlstrom topped a field of 11 candidates Tuesday to win closely-contested seats on the Simi Valley recreation and park district board of directors.

The trio in January will replace Frank Setser, Al Haas and David Strathearn, jr., incumbents who did not seek re-election.

Dewart won his place on the park board by gathering 3,561 votes from the districts 63 precincts. He was followed in the final tally by Brannen with 3,339 and Mrs. Ahlstrom, 3,186.

The three winners had to wait until the early hours of Wednesday to clinch their victories. Returns dribbled into the courthouse in Ventura from 9 p.m. to 3 a.m.

Of the three, only Dewart has been critical of present policies of the park district board, and the election of Brannen and Mrs. Ahlstrom was seen as a repudiation of the demand by some to curtail or abolish district youth recreation programs.

Dewart won his place on the park board by gathering 3,561 votes from the districts 63 precincts. He was followed in the final tally by Brannen with 3,339 and Mrs. Ahlstrom, 3,186.

The three winners had to wait until the early hours of Wednesday to clinch their victories. Returns dribbled into the courthouse in Ventura from 9 p.m. to 3 a.m.

Of the three, only Dewart has been critical of present policies of the park district board, and the election of Brannen and Mrs. Ahlstrom was seen as a repudiation of the demand by some to curtail or abolish district youth recreation programs.

Dewart, 35, is a research specialist at Atomics International. After his election he said he wanted "to thank all people who worked for me and gave their support. Through their efforts, the entire campaign cost less than \$50."

The director-elect said he would begin to study minutes of park board meetings over the last three years, and attend all meetings of the Simi Valley unified school district board of education to better understand "the inner-relationship between the school district and the recreation and park district."

Brannen, charter-president of Simi Valley Junior Chamber of Commerce, said Wednesday he would continue his efforts "to develop Berylwood Park (Los Angeles avenue and Bridgeway street) as I promised in my campaign. I'll also try to hold the tax line, and try to gain support from local clubs and organizations to help in the recreation programs."

Brannen said he would "welcome public comment about the actions of the park district board."

Mrs. Ahlstrom, a 44-year-old homemaker, said she was "delighted and appreciative of the community's support. I'll do my best, and keep learning."

"I plan to attend all district board meetings between now and the time I take office to become oriented to the board's policies. Until I have more information I'll only say that I'll continue to develop a good balance of recreation and park development for the community."

Political Newcomers Fail To Upseat Co. Incumbents

Here's how Simi Valley voted in some key races and ballot propositions Tuesday:

PRESIDENT

Simi:
Johnson—3,206
Goldwater—2,358
Santa Susana:
Johnson—2,569
Goldwater—2,393
Moorpark:
Johnson—801
Goldwater—456

U.S. SENATOR

Simi:
Murphy—3,637
Salinger—2,442
Santa Susana:
Murphy—2,934
Salinger—1,971
Moorpark:
Murphy—629
Salinger—650

CONGRESS, 13th DIST.

Simi:
Teague—3,218
Taylor—2,750
Santa Susana:
Teague—2,760
Taylor—2,156
Moorpark:
Teague—602
Taylor—666

STATE SENATE

Simi:
Lagomarsino—3,404
Chase—2,528
Santa Susana:
Lagomarsino—2,804
Chase—2,060
Moorpark:
Lagomarsino—650
Chase—624

ASSEMBLY

Simi:
Henson—3,283
Spatz—2,623
Santa Susana:
Henson—2,568
Spatz—2,223
Moorpark:
Henson—906
Spatz—345

PROP. 14 Sale and Rental of Real Property

Simi:
Yes—4,561
No—1,406
Santa Susana:
Yes—2,781
No—1,104
Moorpark:
Yes—833
No—433

Election News Service Draws Good Response

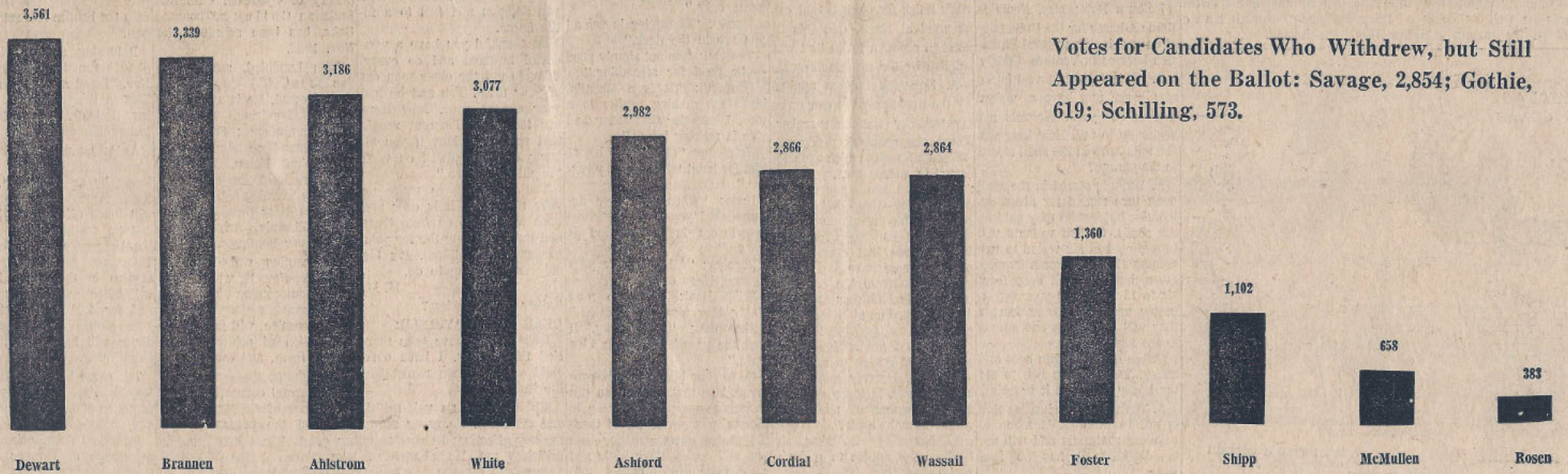
For the first time in Simi Valley history, voters were able to get early results in local campaigns as well as district elections, by using the news election service Tuesday evening.

The service was co-sponsored by the Simi Valley Enterprise and the Sun. Staffs from both papers worked from 8 p.m. to midnight, giving information to callers about the latest results.

Over 250 calls were made during the evening, the majority inquiring about the recreation and parks district board race. Interest was also high on the state senate, state assembly, and congressional races.

Simi Valley Enterprise
Nov. 6, 1964

Here's How Your Rec-Park Dist. Candidates Finished



Site Plans for SV Community Center Ordered

A \$750 contract to draw site plans for Simi Valley's park and community center site was awarded to Don Roberts, Thousand Oaks landscape architect, by recreation and park district

directors Wednesday.

Roberts will also supply development cost estimates.

The 13-acre site, on Cochran west of the railroad spur, is slated for development both as a public park and the location for the community center building.

Funds for construction of that building — raised mostly by Pioneer Day activities during the last two years — now total almost \$10,000.

Roberts' \$750 fee will come from park district funds, not community center building money.

Park district directors chose Roberts for the site plan job over Robert Fleckenstein, Santa Paula, who offered to draw site plans and cost projections for \$500.

Leslie G. Reed, district general manager, said Roberts' higher bid was approved because he maintained a licensed building designer in his firm, and would provide additional information with his plans.

In other action, directors approved sponsorship of an elementary choral program for sixth graders.

The 12 to 15-week course would be operated on a fee basis, with revenue offsetting costs to the district, directors indicated. Mrs. Marilyn Gorman, Simi Valley unified school district teacher, will instruct the course.

**Simi Valley Enterprise
December 11, 1964**